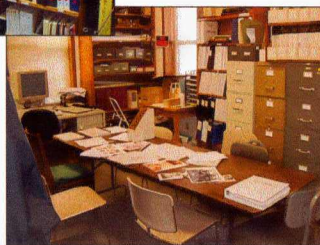
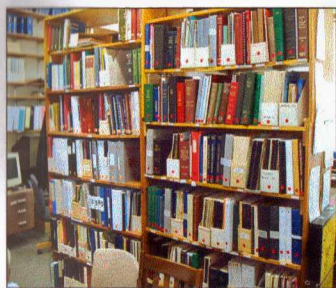


Genealogy Library

The library is open to the public Thursday, Friday, and Saturday afternoons from April through October and by appointment. Those looking for their family history come to the library to use our collections and volunteers answer questions and mail out materials to researchers all across the country.

The library contains materials important to the county's history and the genealogy of the families in this area, such as:

- Extensive collection of family histories
- Maps and plat books
- Complete list of cemetery records
- Microfilm of local papers from 1858 to 2010
- Over 2000 historic photos, including portraits of early families
- Histories of communities in the county, other Missouri counties, and other states
- School records
- Military pension and other military records
- Slave records
- Church records

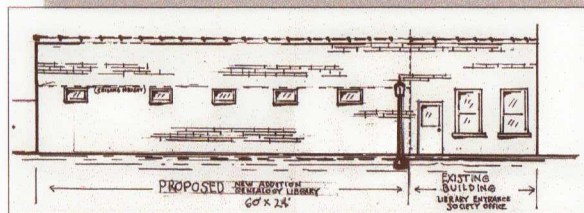


The bookcases in the genealogy library are filled to capacity. More room is needed to house the library's resources and to facilitate their use. Room is desperately needed for additional materials.

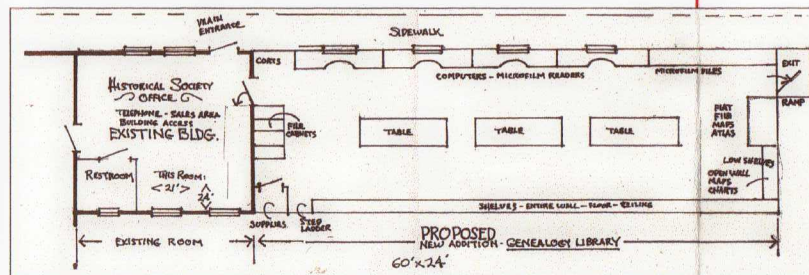
Need for Expansion

Volunteers have done an outstanding job making more room for materials—some of the shelves almost reach the ceiling. However, space to access the materials (and even just to walk around) has gradually shrunk as new bookcases and file cabinets have been added. At present, there is only space for one table that must be shared by those doing research and volunteers. Interest in genealogy has increased in recent years, partly due to a popular television series, "Who Do You Think You Are?"

The collections of several individuals who have spent much of their life researching their families have been offered to the library. Some of these individual collections fill bookcases and file cabinets in private homes. These materials have significant value to those seeking their family's roots. We need additional space to house these and future donations so that these materials can be easily accessed.



A preliminary design for a 60' x 24' room on the west side of the present building has been approved by the Society. Cost is estimated at \$90,000.



How You Can Help

Please pledge to donate a significant sum! While we realize these are tough economic times, we also believe the people of Moniteau County and descendants of our early families will help us preserve their history before it is lost to time and space limitations.

Donations are tax deductible and a receipt will be furnished for tax purposes. We will accept multi-year pledges (up to three years) as well as outright donations.

MCHS Booster: Donations up to \$499 will be recognized in donation book.

MCHS Patron: Donations of \$500 - \$999 will be recognized with name on permanent display in the library.

Bronze* Donor: \$1000 - \$2499—Name engraved on bronze leaf on the permanent donor tree.

Silver* Donor: \$2500 - \$4999, same as above but with silver leaf.

Gold* Donors \$5000 - \$9999, same as above but with gold leaf.

Great Manito* Donor: \$10,000 and up, same as above plus naming privileges for an area of the library.

* If requested, anyone donating \$1000 or more can have a complimentary copy of the 2000 Moniteau County History Book .

Please help us make room for more of your history by making a tax-deductible donation to the Moniteau County Historical Society Building Fund.